



Patents Pending

Parasol Systems Star 600 User Guide

Warning: Read and understand all instructions. Failure to follow all instructions listed below may result in electrical shock, fire and/or serious personal injury and equipment damage.

The STAR600 is designed for dry locations only. Exposure to rain or moisture may Damage system.

Disconnect power before servicing any Parasol Systems equipment.
Servicing to be performed by qualified personnel only.

Work area

Do not operate unit in explosive atmospheres, such as in the presence of flammable liquids, gases, or dust. Powered equipment creates sparks which may ignite the dust or fumes.

Electrical Safety

All Parasol units need to be grounded in accordance with all codes and ordinances. Never remove the grounding from either the connector plugs or from the power source. Do not use adaptor plugs. Check with a qualified electrician if you are in doubt as to whether the unit is grounded. If the unit should electronically malfunction or break down, grounding the unit provides a low resistance path to carry electricity away from the user. Improper grounding can shock, burn or electrocute. Before wiring the unit(s) be certain that the voltages and amperages are within the voltages and amperages listed on the electrical boxes and specified in the instruction manuals. Avoid body contact with grounded surfaces such as pipes, rigging and trusses. There is an increased risk of electric shock if your body is grounded.

Do not abuse the cords. Never use cords or connectors if they are frayed or broken in any way. Call Parasol Systems for maintenance or servicing when needed.

Do Not Open the Electrical Power Box which is on top of the Star unit. Only Qualified technicians are trained to perform maintenance and repairs on the units.

Personal Safety

The Parasol STAR600 is a rotating turntable. Before and during the operation of this unit always stand clear and keep all body parts a safe distance away.

Quick Starts and Stops with the STAR600 create moving inertia. It is recommended that this system be guy-wired at a minimum of 3 points to prevent such inertia.

Parasol Systems recommends this system always be deployed on a level horizontal plane. Do not angle tilt unless specified by the manufacturer.

Stay alert, keep hands, body parts or loose clothing, long hair and jewelry away from moving parts. Do not operate unit while under the influence of drugs, alcohol or medication. A moment of inattention while operating unit may result in serious personal injury.

Avoid accidental starting. Be sure the main switch on side of the electrical power box is turned off before plugging in power supply to either the device power plug (C-5) or the drive motor plug (twist lock).

Disconnect power supply before making any changes or adjustments to the unit. Check for misalignment, binding of moving parts, broken parts and/or any other conditions that may affect the unit from operating correctly.

NOTICE TO VALUED CUSTOMER

It is the intent of these Specifications to cover minimum acceptable quality equipment for a complete installation.

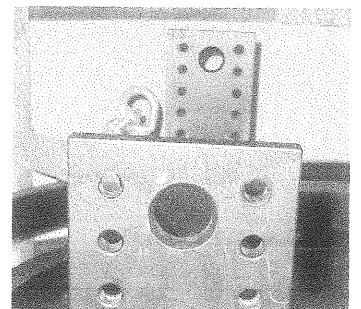
Trade names may be used in this Specification only to facilitate the description of the equipment, and they in no way imply that equal equipment of other manufacturers cannot be proposed for use.

Product description

An electrified rotating turn table (6' diameter) which allows electrical devices such as: cameras, TV screens, projectors and moving head lights fixtures to be rotated and energized. This turn table can rotate in either direction and at variable speeds up to a maximum of 10rpm.

Installation Instructions: *Star 600 system*

1. Determine the structural load capacity of where the unit will be hung from. Approved max load capacity cannot be less than 1200 lbs. / 545 kg.
2. There are a few options of how the Star unit can be permanently installed. There are four lifting hanger brackets on the top of the unit, each hanger bracket has ten 3/8" holes and one 1" hole (see figure #1). The unit can be hard mounted to existing structural



supports using 3/8" bolts or additional cross members can be added so the unit is bolted to these additional pieces and then those pieces are affixed to the existing roof support structure. The 1" holes in the hanger brackets provides the ability to use shackles and cable slings if this option is better suited for the venue.

3. Once it is determined how the Star unit will be mounted position the unit directly below the lifting points to prevent swinging once lifting begins.
4. Affix top of chain hoists or other lifting devices to supporting structure in venue and begin to lift the unit using the four hanger brackets.
5. Lift the unit about 5' or 2m from the floor in order to begin hanging lights or other electrical devices.
6. **Rigging electrical devises.**

Figure #1

- a. Rig the unit before supplying any electrical power to the unit.
- b. Slide the electrical distribution box into the hanger assembly which is under the Star unit and tighten the wing nuts so that the distribution box is firmly held in place.
- c. Plug in the C-5 connector which is on the distribution box into the C-5 connector which is coming out from the bottom of the star unit (see figure #2).

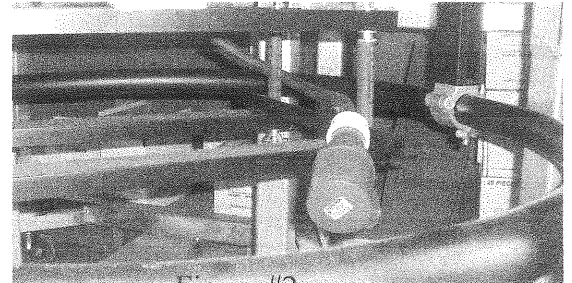


Figure #2

- d. Plug in a DMX cable from the back of the distribution box to the DMX box which is attached to the bottom side of the Star Unit (see figure #3).
- e. Start to hang lights or other electrical devices from the 4' ring. Once they are in the correct location tighten clamps and attach safety cables.
- f. Run power supply from the distribution box to the first light and then daisy chain each light together.
- g. Then run DMX cable from the distribution box to the first light and daisy chain each light together.
- h. Once the 4' ring is rigged, repeat the steps for the outer ring.
- i. In some case the unit can be powered and tested before lifting it into the ceiling. If possible test the unit before lifting.
- j. Run a 30amp, 3 phase, 208 volt power supply to the top of the Star unit and plug in the C-5 power cord to the C-5 connector which comes out of the grey electrical box (see figure #4).
- k. Then run a single phase, 15 amp twist lock power cord to the grey electrical box (see figure #5). **NOTE: Before plugging in the power cord make sure the switch of the side of the grey electrical box is switched to the correct voltage for your region – 115 volt or 230 volts**
- l. Plug a microphone cable (XLR cable) into the E-stop (emergency stop) outlet on the grey electrical box (see figure #6) and run that cable back to the lighting control board and attach that end to the yellow emergency stop button box, which is supplied with the Star600. **NOTE: The Star 600 will not**



Figure #3

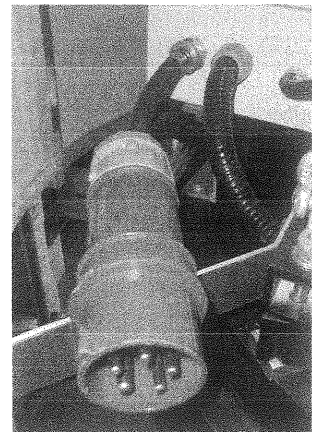


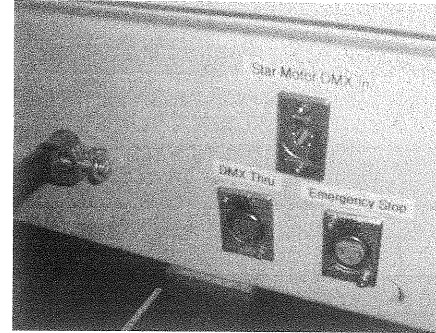
Figure # 4



operate if the emergency stop button is not wired to the unit.

- m. Run a DMX cable from the lighting control console, which will control the lights or devices, to the Star600 and plug it into the jack called "Light/Device" on the electrical control box on top of the unit (see figure #6).
- n. Run a DMX cable from the lighting control console, which will control the rotation and speed of the Star unit, to the Star600 and plug it into the jack called "Star Drive Motor (rotation & speed)" on the electrical control box on top of the unit (see figure #6).

Figure # 5



7. **Before testing**, make sure there are no wires or cables between the two aluminum plates or near any of the wheels. Tie back any cables if necessary.
8. Once power is supplied test the unit before lifting.
9. Keeping the unit level - lift the unit into the ceiling and make secure.
10. Attach additional cable slings or web slings from unit to support structure for additional safety.
11. If the unit is not hard mounted to the support structure there could be a tendency for the Star to gyro or twist when operating. If this happens, multiple guild wires will be need to be attached from the four lifting hangers on the Star and then to some fixed location at a diagonal direction to prevent twisting or rotating.

Figure # 6

WARNING:

- Make sure all power is turned off to the unit before any adjustments are made to the rigging or any part for any reason.
- Do not reach hands or other objects into the Star while it is powered or rotating.
- Serious injury will occur if hands or fingers get caught in any of the wheels and driven plate on the Star unit.
- Make sure there are no other objects (cables, cords, rope, curtains, etc.) hanging near the Star600 while in operation. Keeps back any object which could get tangled up in the unit and rigging while it is rotating.

Touring Case

1. The touring case is designed to carry the Star600 with all the lights and distrobution box per-rigged.
2. Make sure hands and body parts are kept clear of the cradles on the case while lowering the Star600
3. If you are lowering the Star600 pre-rigged into the touring case make sure none of the light touch or interfere with any parts of the touring case. If this happens, the location of some of the lights will need to be adjusted.
4. Lower the Star unit into the cradles which hold each of the six arms in place.
5. On three of the six legs there are push pins which need to be inserted through the holes on the cradle section on the legs and through the holes in the arms of the Star600. These pins prevent the unit from jumping out of the touring case while traveling.

6. The touring case can be lifted with a fork lift or can be wheeled into a truck. The casters in the middle of the touring case are 30" apart which will enable the case to roll up a 30" wide ramp and then into a truck.

Extension Arms and 8', 10' rings

1. The 8' or 10' ring package comes with 6 extension arms and one 8' or one 10' ring. The rings are cut into 1/3rds for ease of handling.
 2. In order to install the extension arms (6ea.) slide the non-coupling end inside the existing arms which support the 6' rings.
 3. If the 8' ring package was purchased then the arms need to be pushed in so that the center of 6' ring coupler is 12" to the center of the coupler on the extension arm. If the 10' ring package was purchased then the couplers need to be 24" from center to center of the couplers.
 4. Once the arms are in place lay the three curved pieces of tubing in place so that the joints are centered in the middle of a coupler (see figure #7).
 5. Remember: even though there are now three rings the total load capacity can not exceed 600 lbs.
-

Optional Equipment:

1. Extension arms with 8' batten ring
2. Touring case
3. Multi-ring controller

Quick Details

Place of Origin: New Westminster, British Columbia, CANADA

Brand Name: Star

Model Number: 600

Dimensions: (Outer Circle) 72", (Inner Circle) 48"

Color: Black

Material: Aluminum Alloy

Hardness: T60 -6061

Packaging & Delivery

Packaging Detail: Plywood Crate or Aluminum Touring Case (optional accessory)

Delivery Detail: 2 weeks (within North America)

Specifications

AAA strength T6 6061 aluminum material

Gross weight: 440 lbs / 200 kg

Load capacity: 600 lbs / 272 kg

High capacity 6' variable speed
motorized multi-directional circular turn table/truss

Main information for Star 600

Dimension	72" Diameter x 30" Height
Material	Aluminum alloy
Hardness	T 60 - 6061
Max Load	600 lbs / 200 kg
Outer tube	2"
Inner tube	2"
Features	Fast and easy to install and uninstall. Durable high quality and portable multi-directional circular entertainment turntable / truss.
Application	Overhead truss system applicable for indoor / covered concert, exhibits and displays.
Motor Specs	1 HP, twist lock connector, single phase, 15 amp, 115v / 230v
Electrical data	C5 connector - 30 amp, 3 phase, 208v connection cord for energizing the electrical device.
Arm & baton (optional)	8' or 10' extension ring can be added, which extends farther out from the side of the turn table, increasing the total rings to a maximum of 3.

Power Supply

1. Power supply to the drive motor is single phase, 15 amp, 115 volt / 230 volt, variable speed certified to CSA / UL standards.
2. Power supply to the lights or devices is certified at 3 phase, 208 volt, 30 amps, 60 hertz, certified to CSA / UL standards

Electrical Connections and Controls

- i. Wiring and conduits for electrical power, control and instrumentation will be provided by an Independent Certified Electrical Contractor, not the manufacture.
- ii. The Independent Electrical Contractor shall furnish and install all wiring and other required electrical items not specifically noted to be furnished by the manufacturer, including but not limited to proper size wire, conduit, fittings, and supports.
- iii. Two electrical supplies are required: **a.)** C5 connector, 30 amp, 208v, 3 phase supply (10 gauge wire). **b.)** twist lock connector, 15 amp, 115 / 230v, single phase electrical supply (14 gauge wire). **NOTE: make sure the switch of the side of the grey electrical box is switched to the correct voltage for your region – 115 volt or 230 volts.**

Anchorage and Fasteners

The manufacturer has supplied four hard rig support brackets on the Star 600 equipment. Additional anchoring equipment is not supplied.

GUARANTEE AND WARRANTY

Limited Warranty of Parasol™ Products

Parasol warrants its products free of defects in materials and workmanship for a period of one year from the date of delivery to buyer. Parasol's only obligation and buyer's sole and exclusive remedy under this warranty is for repair at Parasol's facility or, at Parasol's option, replacement of defective items, without charge for factory applied labor or materials. Parasol reserves the right to replace defective components or assemblies with factory refurbished equivalents. If Parasol furnishes replacement parts under warranty, the defective item(s) become Parasol's property. This warranty does not apply to defects or problems resulting from improper or inadequate maintenance, unauthorized modification, misapplication, misuse (including use in a manner inconsistent with its intended function), operation outside of the products' environmental or operational specifications, abuse, abnormal strain, improper site preparation, improper installation (including failure to adhere to any recommended installation requirements), or use of these products with other products not manufactured by Parasol.

Buyer is responsible for the cost of removing and crating any allegedly defective product and for all freight, i.e., freight for both returning the product to (prepaid, FOB to an authorized warranty service facility designated by Parasol) and receiving return shipment of the repaired or replacement product from Parasol's warehouse. Before returning any product for warranty service, buyer must obtain, in writing, a Return Goods Authorization (RGA) to qualify for warranty service.

PARASOL IS NOT LIABLE WHETHER IN CONTRACT, WARRANTY, TORT (INCLUDING NEGLIGENCE), STRICT LIABILITY OR ANY OTHER LEGAL THEORY FOR ANY DIRECT, INDIRECT, SPECIAL, INCIDENTAL OR CONSEQUENTIAL DAMAGES, INCLUDING, BUT NOT LIMITED TO, LOSS OF PROFITS, DAMAGE TO FACILITIES OR ASSOCIATED EQUIPMENT, LOSS OF INFORMATION, LOSS OF SALABLE PRODUCTS, DOWN TIME, LABOR AT SITE, BUSINESS INTERRUPTION COSTS OR OTHER ECONOMIC LOSS, OR ANY CLAIMS BY BUYER'S CUSTOMERS OR OTHERS FOR ANY SUCH LOSSES, CLAIMS, DAMAGES, COSTS OR EXPENSES. PARASOL'S LIABILITY AND BUYER'S SOLE AND EXCLUSIVE REMEDY WITH RESPECT TO ANY PARASOL PRODUCTS PURCHASED FROM PARASOL BY BUYER, WHETHER IN CONTRACT, TORT, STRICT LIABILITY OR OTHERWISE, SHALL BE AS SET FORTH ABOVE AND IN ANY EVENT SHALL NOT EXCEED THE PURCHASE PRICE PAID BY BUYER FOR SUCH PRODUCT. EXCEPT AS OTHERWISE PROVIDED HEREIN, ANY PARASOL PRODUCT IS SOLD ON AN "AS IS" BASIS AND BUYER TAKING POSSESSION OF SUCH PRODUCT SHALL BE CONCLUSIVE EVIDENCE AS AGAINST BUYER THAT THE PRODUCT IS IN SATISFACTORY CONDITION. PARASOL MAKES NO OTHER WARRANTIES EXPRESSED OR IMPLIED AND SPECIFICALLY DISCLAIMS ANY IMPLIED WARRANTY OF MERCHANTABILITY OR FITNESS FOR A PARTICULAR PURPOSE.

Any warranty or similar rights provided by any applicable laws are hereby waived by Buyer to the extent such rights contradict this warranty or to the extent such rights are greater than those provided herein. If any such rights cannot be waived, then they will be applicable to the narrowest extent possible, but not in excess of the rights granted herein. In any event, buyer expressly releases Parasol from any

damages, whether direct, indirect, special, incidental or consequential to the extent such damages exceed One Hundred Dollars (CAD\$100.00), regardless of where this product is located.

This warranty is governed by the laws of the Province of British Columbia and the laws of Canada applicable therein, and any dispute under this warranty must be adjudicated in a forum located the Province of British Columbia. The Convention on the International Sales of Goods shall not apply to any sale of Parasol Products. No agent, employee or representative of Parasol has any authority to bind Parasol to any affirmation, representation or warranty concerning products sold by Parasol except to the extent such affirmation, representation or warranty is specifically set forth above, or is otherwise expressly contained in writing in a document specific to buyer's individual transaction, states that Parasol is waiving the above warranty and remedies, and is personally signed by an authorized signing officer of Parasol.

DISCLAIMER

Parasol Lighting System is not held liable for improper installation and wiring of system components. Any modification to the equipment that may, at the discretion of the manufacturer, inhibit the equipments performance will void the Guarantee and Warranty.

REPLACEMENT PARTS & QUESTIONS

Customer Support Contact information:

Address: #106 - 552A Clark Rd Coquitlam BC V3J 0A3

Ph. 604-525-3653



Contact Parasol Systems at:

info@parasolsystems.net

604-937-7657